

**L.J.R. Pumps and Parts**  
1660 Townhurst Dr. Ste. H  
Houston, Texas 77043  
Phone: 713-397-0082  
Fax: 713-647-8233

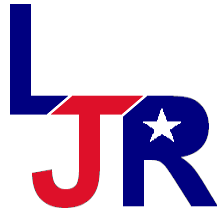


### **UNITIZED LJR-440-HP PUMP SKID**

#### **ENGINE:**

Caterpillar 3406 reman zero hours 460HP or Detroit Diesel Series 60 12.7L  
Radiator – fan & fan guard new for use to 50 degrees centigrade  
Muffler – large capacity with spark arrestor for maximum noise suppression  
Engine mounted with emergency kill switch for complete air intake shut off  
Oil cooler for transmission and engine oil cooling  
Electric starter 24 volt, dual 12 volt D batteries mounted in protective box  
Alternative air starter if required





**L.J.R. Pumps and Parts**  
1660 Townhurst Dr. Ste. H  
Houston, Texas 77043  
Phone: 713-397-0082  
Fax: 713-647-8233

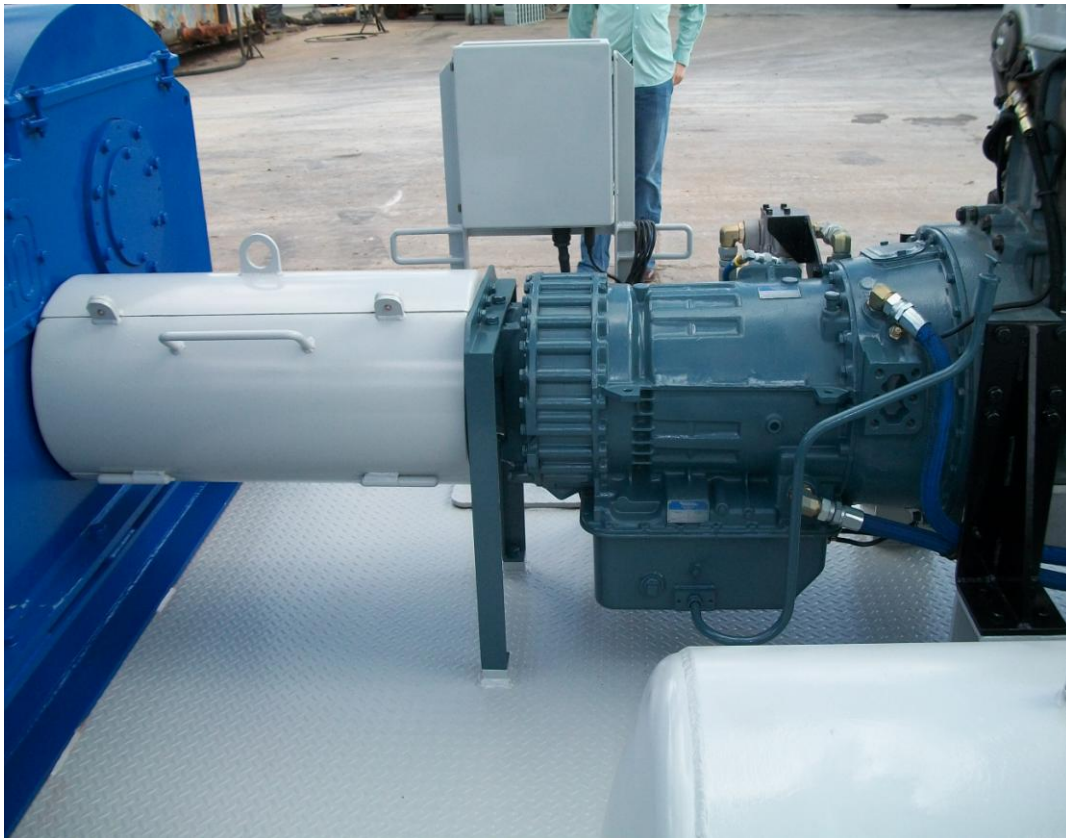
**TRANSMISSION:**

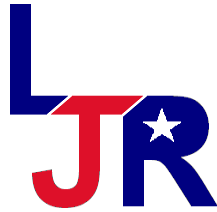
Allison 750 DRD reman zero hours, 5 speed manual shifting, lockup indicator light, full flow oil filter

All hoses and fittings for cooling and operating

Drive shaft with 6" capling and hub to the pinion shaft

Short mounting with guard



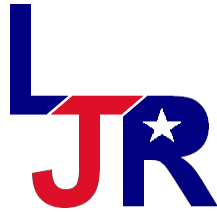


**L.J.R. Pumps and Parts**  
1660 Townhurst Dr. Ste. H  
Houston, Texas 77043  
Phone: 713-397-0082  
Fax: 713-647-8233

**CONTROL PANEL:**

- Start and Stop switch key
- Manual Throttle
- Emergency kill lever
- RPM tach gauge
- Transmission lockup indicator light
- Volt/Amp meter
- Engine temp and oil pressure gauge
- Transmission temp and pressure gauge
- Stroke counter BPM meter
- Martin decker pressure gauge



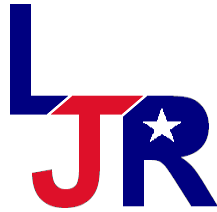


**L.J.R. Pumps and Parts**  
1660 Townhurst Dr. Ste. H  
Houston, Texas 77043  
Phone: 713-397-0082  
Fax: 713-647-8233

**PUMP: LJR Manufactured W-440-HP Triplex**

- One year warranty for manufacturing defects
- Fluid end dressed with 4-1/2" pistons and liners. Max volume output 8.8 BBL per minute. Max Pressure 5,000 PSI
- Suction charging pump mission mag or equivalent 5" by 6", belt driven off pinion shaft
- Liner washer: Brown & Sharp 3S pump with hoses from suction holding tank to spray nossels
- Pulsation dampener 2-1/2 gals – 5,000 PSI – Accumulators, Inc.
- Pressure gauge – Martin Decker off discharge
- Oteco shear relief valve – 5,000 PSI max pressure
- Discharge line 3" – 5,000PSI, 1002 union
- Fluid end capable to change piston and liners from 3-1/2" – 4-1/2"
- 6" screen type suction filter



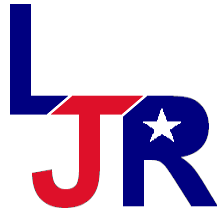


**L.J.R. Pumps and Parts**  
1660 Townhurst Dr. Ste. H  
Houston, Texas 77043  
Phone: 713-397-0082  
Fax: 713-647-8233

**SKID:**

- 3 runner 10" I-beam oil field skid. 8 FT x 24 FT – with radiator protection bar and end cap; winch cable lifting frame.
- Skid floored with metal plate
- Tool Box
- Stand for control panel
- Painted with primer and epoxy finished paint grey
- Fuel Tank – 150 gal.





**L.J.R. Pumps and Parts**  
 1660 Townhurst Dr. Ste. H  
 Houston, Texas 77043  
 Phone: 713-397-0082  
 Fax: 713-647-8233

**SPECS/PERFORMANCE:**

**W-440-HP**

6" STROKE High Performance Triplex		STROKES PER MINUTE	300	250	200	150	100	50
		INPUT HORSEPOWER	440	367	293	220	147	73
PISTON AND LINER SIZE	DISCHARGE PRESSURE RATING (PSI)	GALLONS PER REVOLUTION	OUTPUT GALLONS PER MINUTE					
			4-1/2"	2,800	1.239	372 (8.8BPM)	310 (7.3BPM)	248 (5.9BPM)
3-1/2"	5,000	0.750	225 (5.3BPM)	187 (4.4BPM)	150 (3.5BPM)	112 (2.6BPM)	75 (1.7BPM)	37 (0.8BPM)

